

“LUKAUTIM NAU, LUKIM TUMORA”

ENVIRONMENTAL EDUCATION SERIES

OL BINATANG, ROKROK NA PISIN NAMEL LONG
BRAHMAN, MADANG PROVINS NA
MT. WILHELM, SIMBU PROVINS
PAPUA NIUGINI



DISPELA WOK I KAM LONG OL SUMATING BILONG
UNIVERSITY OF PAPUA NEW GUINEA NA NEW
GUINEA BINATANG RESEARCH CENTER

WANTAIM STRONGPELA HALIVIM I KAM LONG
THE CHRISTENSEN FUND LONG USA

AUGUST 2010

Stori bilong *Kumekame*: Ol kainkain batapulai bilong bus namel long Brahman i go antap long bus bilong Mt. Wilhelm

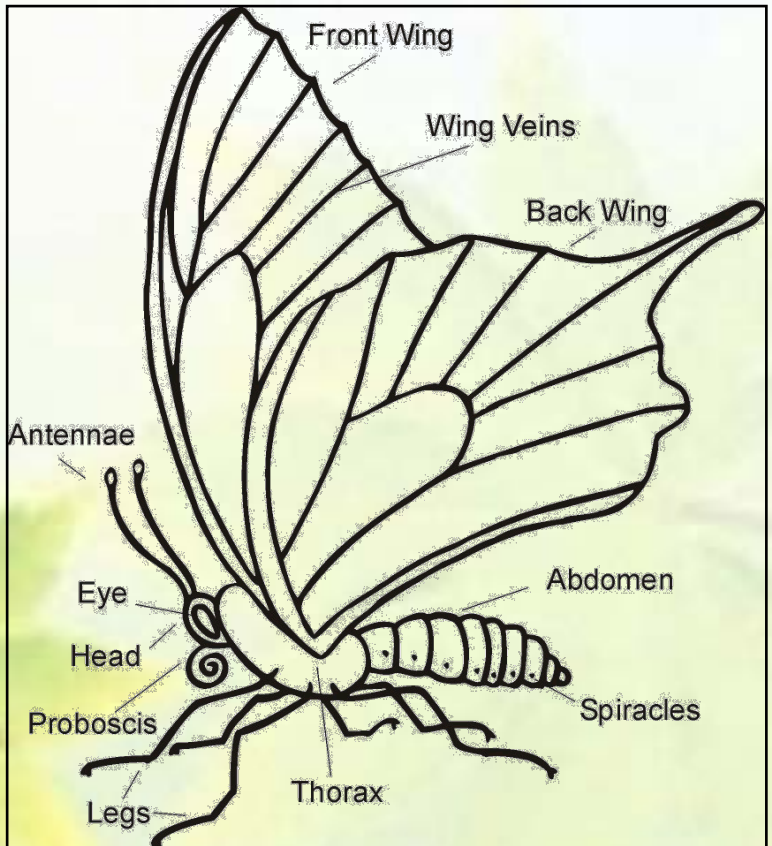
Legi Sam na Fidelis Kimbeng

Biology Department, University of Papua New Guinea, Port Moresby & New Guinea Binatang Research Center, Madang, Papua New Guinea

Introdaksen:

Long tokpeles bilong ol manmeri husait i save stap namel long Brahman na Mt. Wilhelm, ol isave kolim batapulai olsem *Kumekame*. Dispela em wanpela liklik stori bilong ol sumatin wantaim ol wokman bilong ol na tu ol lokol cominiti namel long Brahman long Madang Provins na Mt. Wilhelm long Simbu Provins long ol batapulai.

Batapulai em wanpela binatang i gat siks pela lek na fopela wing (Piksa 1). Ol saientis i save laik long stadim batapulai bilong wanem, em i save stap long olgeta hap, kain olsem long nambis i go antap long kol maunten. Kain olsem yumi ol man, ol batapulai tu i save stap long kominiti. Dispela pasin bilong ol batapulai emi gutpela bilong wanem ol saientis iken yusim long stori moa long hao ol batapulai bai suruk i go antap long maunten sapos nambis i go hot tumas, o klaimet senis (Climate Change). Dispela kain wok i no bin kamap long Papua Niugini bipo olsem na emi gupela moa long save long wanem kain batapulai i save stap long nambis i go antap long kol maunten. Dispela save bai halivim yumi ol manmeri luksave long hao klaimet senis bai afektim yumi wanwan.



Piksa 1. Ol wan wan bodi – pat bilong batapulai (*Kumekame*) long tok inglis.



Piksa 2. Hao mipela rekotim ol batapulai na sampela hap mipela wok.

Wei mipela kaonim na rekotim batapulai:

Dispela piksa (Piksa 2) soim hao mipela bin rekotim ol batapulai long bus bilong Brahman i go antap long Mt. Wilhelm. Mipela bin wokabout wantaim net na rekotim olgeta batapulai mipela lukim. Sampela batapulai bin hat tru long kolim nem bilong ol olsem na mipela karim go bek long wok peles bilong mipela long lukluk gut long ol (laboratory). Bihain long dispela, mipela givim nem. Long wanwan hap, mipela wok 10 pela dei taim san bin sain. Mipela no bin wok taim kilaut ipasim ai bilong san o iluk olsem bai em ren.

Ol bataplai bilong Kausi – 200 m asl:

Kausi em wanpela hap we mipela bin rekotim ol bataplai. Long hia, mipela i bin painim olsem Kausi i gat planti bataplai tru. Mipela rekotim olsem 2800 pela bataplai we ilukim klostu long 140 pela spisis. Yu yet ken lukim sampela piksa bilong ol bataplai bilong Kausi.



Nem: *Danis danis*

We yu ken lukim: Kausi i go antap long Bundi Stesin tasol. Em save plai long bik bus wantaim bus we i no paspas tumas.

Kaikai bilong em: Em save kaikai wanpela diwai i save smel ol kolim long *Alphitonia*.

Pasin bilong em: Dispela bataplai em save plai isi-isi tru.

Nem: *Mycalesis phidon*

We yu ken lukim: Kausi i go antap long Bundi Stesin tasol. Em save plai long ol ples olsem ol kunai. Wankain tu insait long ples we garden i bin stap bipo or bik bus i bagarap liklik.

Kaikai bilong em: Kaikai bilong dispela bataplai em ol malmalum gras nambaut.

Pasin bilong em: Planti taim, bai yu bungim dispela bataplai sindaun antap long gras o diwai we san i save sutim stret. Plai bilong em i spit nogut tru.



Nem: *Papilio aegaeus*

We yu ken lukim: Kausi i go antap long Bundi Stesin tasol. Em save plai long bus we em i no paspas tumas. Wankain olsem ol ples we garden i bin stap bipo or bik bus i bagarap liklik. Na tu arere bilong ol wara

Kaikai bilong em: Em save kaikai ol lip bilong muli wantaim ol narapela diwai wankain olsem muli.

Pasin bilong em: Plai bilong dispela bataplai em spit nogut tru. Planti taim bai yu lukim em i go ikam bihainim arere bilong wara o rot insait long bik bus.



Ol bataplai bilong Kumi – 700 m asl:

Wankain olsem Kausi, mipela bin painim olsem i gat planti bataplai long Kumi tu. Long hia, mipela lukim olsem i gat 108 spisis bilong ol bataplai. Klostu olsem 1700 pela bataplai ikam insait long hap we mipela bin wok long wok. Tamblo em piksa bilong sampela spisis mipela bin rekotim.



Nem: *Junonia erigone*

We yu ken lukim: Kausi i go antap long Bundi Stesin tasol. Em save laikim ples we nogat diwai na drai olsem ol rot nambaut na tu ol gaden.

Kaikai bilong em: Em save kaikai ol gras ol kolim long *Ruellia* na *Sida*.

Pasin bilong em: Plai bilong dispela bataplai em isi isi na planti taim, em bai sindaun long ol lip bilong ol liklik diwai o gras na sanim em yet.

Nem: *Melanitis amabilis*

We yu ken lukim: Yu bai lukim dispela bataplai long Kausi i go antap long Bundi Stesin tasol. Ol ples we em save laik long plai em ol bus we i bagarap liklik na ol olupela garden.

Kaikai bilong em: Dispela bataplai save kaikai lip bilong suga wantaim kunai.

Pasin bilong em: Em i no save plai tumas long wanem em save laik malolo na wetim poro bilong em. Yu ken putim was long apinun na lukim em go kam painim kaikai.



Nem: *Tagiades japetus*

We yu ken lukim: Mak bilong dispela bataplai em inapim Kausi i go antap long Bundi Stesin tasol. Hap we yu bai bungim dispela bataplai em ol bus we igat planti kuru diwai na arere long ol wara.

Kaikai bilong em: Em save kaikai ol lip bilong ol wail yam wantaim ol rop bilong kaukau.

Pasin bilong em: Dispela bataplai em wanpela bataplai we plai bilong em i spit nogut tru. Sampela taim bai em ken mekim yu kirap nogut.



Ol bataplai bilong Koviamarai na Totovaije – 1200 m asl:

Long hia, mipela wok long tupela hap – Koviamarai na Totovaije. Mipela rekotim 1563 bataplai na 103 pela spisis. Piksa soim sampela spisis mipela lukim.



Nem: *Graphium sarpedon*

We yu ken lukim: Kausi i go antap long Bundi Stesin tasol. Igat ol narapela bataplai i luk wankain olsem em we pasin bilong ol tu wankain. Planti taim em save bihainim ol hap we igat wara o bus we bagap I kamap long em.

Kaikai bilong em: Em save kaikai ol lip bilong sawasap wantaim kastapol. Ol narapela diwai wankain olsem sawasap na kastapol tu em save kaikai.

Pasin bilong em: Plai bilong dispela bataplai em spit nogut tru. Em i no save sindaun isi long wanpela hap. Em bai stap liklik taim tasol na bihain kirap na go sindaun long narapela hap.

Nem: *Junonia villida*

We yu ken lukim: Kausi i go antap long Bundi Stesin tasol. Yu bai bungim dispela bataplai long ol gaden na rot nambaut we igat planti san.

Kaikai bilong em: Em save kaikai ol rop olsem kaukau wantaim narapela tupela ol kolim long *Portulaca* na *Thunbergia*.

Pasin bilong em: Dispela bataplai em save plai isi isi na planti taim, em bai sindaun long ol lip bilong ol liklik diwai o gras na stailim em yet.



Nem: *Ornithoptera priamus*

We yu ken lukim: Dispela traipela bataplai save stap long Kausi i go antap long Bundi Stesin tasol. Yu inonap abrusim long wanem em i kalapul stret.

Kaikai bilong em: Em save kaikai ol lip bilong wanpela rop ol kolim long *Aristolochia*.

Pasin bilong em: Plai bilong dispela bataplai em isi isi tasol sapos em pret bai em plai spit nogut tru. Planti taim bai yu lukim em plai antap tru long het bilong ol longpela na traipela diwai.



Ol bataplai bilong Kumuntra – 1700 m asl:

Kumuntra em wanpela hap giraun long Bundi. Long dispela hap, mipela rekotim klostu long 30 pela spisis insait long 650 pela bataplai. Piksa soim sampela bataplai mipela rekotim.



Nem: *Symbrenthia hippoclus*

We yu ken lukim: Dispela bataplai em save go inap long mak bilong Bundi Stesin tasol. Olsem ol narapela bataplai husait i save laikim ples we i no paspas tumas, em tu bai yu bungim em long ol olupela gaden na tu ol ples we wara i ron long em.

Kaikai bilong em: Dispela bataplai save kaikai lip bilong wanpela mosong diwai ol kolim long *Pipturus*.

Pasin bilong em: Plai bilong dispela bataplai em spit nogut tru. Sampela taim yu i no nap lukim em plai. Em wanpela bataplai we em save giamanim ai bilong yumi ol man.

Nem: *Papilio laglaizeii*

We yu ken lukim: Dispela bataplai bai yu bungim namel long Kumi na Bundi Stesin tasol. Em save plai long bus we em i no paspas tumas na sampela taim, arere long ol wara nambaut.

Kaikai bilong em: Em save kaikai lip bilong tupela diwai ol kolim long *Litsea* wantaim *Cinnamoum* (skin diwai)

Pasin bilong em: Dispela bataplai em wanpela bataplai husait i save plai spit nogut tru. Planti taim bai yu bungim em plai raun raun tasol.



Nem: *Taenaris schoenbergi*

We yu ken lukim: Ol hap we yu bai bungim dispela bataplai em long Kausi i go inap long Snopas tasol. Em bai plai raun – raun long ol bik bus wantaim ol eria we ol manmeri bin gaden bipo.

Kaikai bilong em: Ol saientis i no klia tumas wanem kaikai bilong dispela bataplai olsem na em wanpela spesol bataplai bilong dispela eria.

Pasin bilong em: Dispela bataplai em wanpela strongpela bataplai long plai tasol sapos win i kam strong tumas, bai em no inap plai gut.



Ol bataplai bilong Snopas – 2200:

Snopas em wanpela ples yet insait long Madang Provins bilong Papua Niugini. Yumi ken tok olsem emi las peles bilong Madang long wanem em i stap klostu tru long Simbu Provins. Long hia, sno i save karamapim peles olgeta taim. Mipela rekotim klostu long 500 bataplai i gat 22 spisi. Piksa soim sampela bilong ol bataplai.



Nem: *Mycalesis discobolus*

We yu ken lukim: Yu i no inap lukim dispela bataplai planti taim. Em save stap namel long Kumi na Snopas tasol. Ples we yu bai bungim em e mol olupela garden o bus i bagarap liklik.

Kaikai bilong em: Em save kaikai ol lip bilong ol gras kain olsem piksa i soim.

Pasin bilong em: Plai bilong dispela bataplai em isi isi na planti taim bai man i save malolo long lip bilong gras.

Nem: *Toxidia arfakensis*

We yu ken lukim: Yu bai lukim dispela bataplai namel long Bundi na Snopas tasol.

Kaikai bilong em: Wantain olsem *Mycalesis discobolus*, em tu save kaikai ol lip bilong ol gras.

Pasin bilong em: Plai bilong dispela bataplai em spit nogut tru. Sampela taim, bai ol bung na dring wara i save stap antap long pekpek bilong ol pisin.



Nem: *Eurema blanda*

We yu ken lukim: Sapos yu raun long Brahman i go antap long Bundi, yu bai gat gutpela sans long bungim dispela bataplai. Em save laikim eria we i gat ol kuru diwai gro long em, na tu ol peles we kunai i kamap long em.

Kaikai bilong em: Dispela bataplai i save kaikai lip wbilong wanpela diwai i luk olsem marmar o seidtri ol kolim long *Caesalpinia*. Wan wan taim tu em save kakai lip bilong krismas diwai ol kolim long *Albizia*.

Pasin bilong em: Plai bilong dispela bataplai em spit nogut tru sapos yu laik holim em. Sapos nogat, em bai plai namel spit tasol. Planti taim bai yu lukim em sindaun long arere long wara na drin isi isi. Sapos yu laki, bai yu bungim planti tru long wanpela taim tasol.



Ol bataplai bilong Keagaemange – 2700 m asl:

Ol has peles i save kolim Keagaemange “Bruno Somil” bikos wanpela lapun waitman (Bruno) bilong Switzerland i bin katim diwai bipo tru. Klostu olsem 80 pela bataplai bin plai na mipela rekotim. I bin gat 11 spisis tasol tu. Piksa soim sampela bilong ol bataplai mipela lukim na rekotim.



Nem: *Delias mira*

We yu ken lukim: Dispela em wanpela naispela bataplai yu ken bungim namel long Bundi Stesin na Snopas. Em wanpela bataplai we yu bai painim long ol maunten bilong Papua Niugini na Papua Provins bilong Indonesia tasol. Kaikai bilong e mol kolim long mistletoe.

Kaikai bilong em: Em save kaikai wanpela diwai ol kolim long mistletoe.

Pasin bilong em: Dispela bataplai em save plai hariap tru taim em painim kaikai o poroman o poromeri bilong em.

Nem: *Graphium weiskei*

We yu ken lukim: Wanpela naispela bataplai tru bai yu bungim namel long Kumi na Keglesugle long Mt. Wilhelm. Em save laikim ol eria we gaden i bin kamap bipo tasol ol man i no wokim gaden long longpela taim na i luk wankain liklik olsem bik pus ken. Wankain tu, em save laik long bihainim ples we i gat wara.

Kaikai bilong em: Em save kaikai lip bilong wanpela diwai ol kolim long *Sassafras*.

Pasin bilong em: Plai bilong dispela bataplai em spit nogut tru na em wanpela bataplai we yu laki tasol bai yu ken holim em. Planti taim yu ken lukim em sindaun long waisan arere long wara na drin wara.



Nem: *Delias niepelti*

We yu ken lukim: Yu bai bungim dispela bataplai namel long Bundi Stesin na Snopas. Em save plai long bus we em i no paspas tumas. Wankain olsem ol ples we garden i bin stap bipo or bik bus i bagarap liklik.

Kaikai bilong em: Em save kaikai wanpela liklik diwai ol kolim long *Helicia*.

Pasin bilong em: Dispela bataplai em save plai hariap tru na planti taim, yu ken lukim em sindaun long waisan arere long wara na drin wara.

Ol bataplai bilong Mt. Wilhelm Eria:

Long Mt. Wilhelm, mipela bin gat tupela hap we mipela wok – 3200 m asl na 3700 m asl. **3200 m asl** – Klostu oslem long namel bilong maunten, mipela rekotim 2 pela spisis tasol insait long 93 pela bataplai. Dispela hap em kol nogut tru na mipela ting olsem ol binatang bai i no inap long planti.

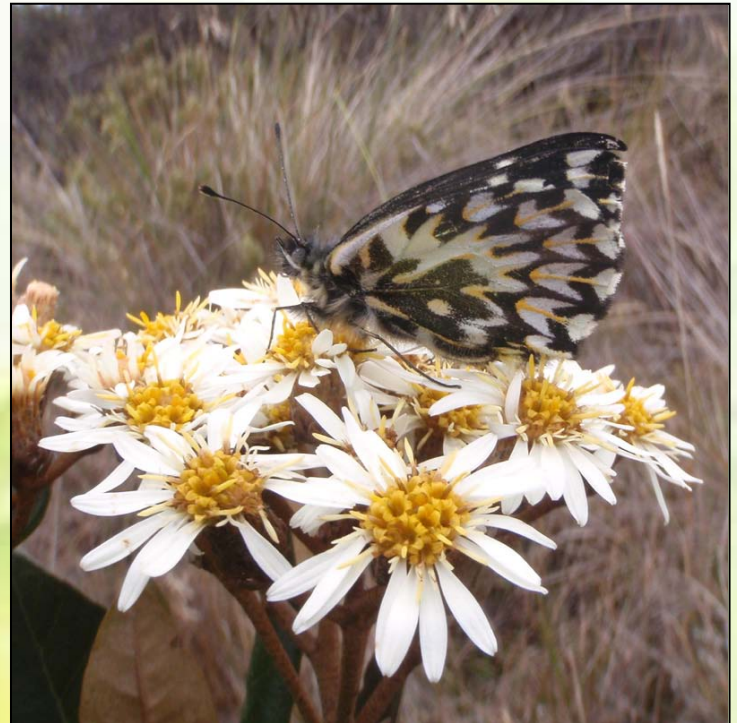
3700 m asl – Dispela hap em kol nogut tru na mipela bin wari liklik olsem nagat bataplai bai plai, tasol mipela guria liklik long lukim wanpela spisis i wok long go ikam go ikam. Yumi ken tok olsem em i wanpela spesol spisis bilong Mt. Wilhelm long wanem i no i gat narapela bataplai save plai long hia. Klostu olsem 50 pela wok long plai go kam taim mipela wok long rekotim populeisen bilong ol bataplai long kol ples Mt. Wilhelm. Piksa soim dispela spesol bataplai bilong Mt. Wilhelm.

Nem: *Delias gillardi*

We yu ken lukim: Snopas i go antap long Mt. Wilhelm. Em save plai long bus we em i no paspas tumas. Wankain olsem ol ples we garden i bin stap bipo or bik bus i bagarap liklik.

Kaikai bilong em: Em save kaikai wanpela diwai ol kolim long mistletoe.

Pasin bilong em: Dispela bataplai em save plai hariap tru taim em painim kaikai na poro bilong em.



Tok tenkyu:

Mi laik tok bikpela tenkyu tru i go long ol lokol kominiti husait i save stap long Kausi, Kumi, Bundi, Snopas na Mt. Wilhelm. Dispela wok i wanpela hatpela wok na sapot bilong ol papagraun i bin halivim mipela gut tru long mekim dispela wok kamap gut. Wankain tu, Alois Koane i bin wok hat nogut tru long bungim



Piksa 3. Legi Sam na Fidelis Kimbeng sanap antap long wanpela maunten lukluk godaun long wara Piunde long Mt. Wilhelm Nesinel Pak.

komiti na wok wantaim mipela long kisim dispela wok i go long arere bilong em. Long kolim nem bilong wanwan manmeri bai nogut mi tinglus long sampela. Em olsem na mi tok tenkyu tasol long olgeta manmeri long ol hap mipela wok long em. Wanbel stap!



Geometrid Moths (*Gi-yo-met-rid* bataflai) bilong Bundi na Mt Whilem

By Pagi Toko and Bonny Herman

New Guinea Binatang Research Center, PO Box 604, Madang, Papua New Guinea

Introdaksen

Geometrid bataflai emi wanpela bataflai bilong nait. Planti isave flai raun lo nait tasol. Ol save man bilong bataflai itok igat kain olsem 23,000 kainkain geometrid bataflai insait long world. Insait lo Papua Niu Guini yet igat ova 1000 kaikain istap. Displa nait bataflai igat planti kaikain color. Sampela brown, sampela green na sampela ol mix color. Tasol planti ino bright tumas olsem bataflai bilong day time.



Wonem impotence bilong geometrid bataflai insait lo bush?

Igat planti rison...

1. Taim ol istap olsem caterpila (snake) state ol isave kaikai leaf bilong diwai na ol narapela plants. Olsem so kankain geometrid bataflai insait lo bush iken soim olsem planti gutpla leaf or diwai istap.
2. Ol isave kamap kaikai bilong ol narapela wild animols olsem pisin, lizard na rokrok.

Olgeta samting insait long bush igat reason na em istap. Sampela samting olsem dispela bataflai ino save helpim mipela directly tasol ol isave helpim planti diwai, plants na animols. Olsem so yumi mas respektim ol na lukautim gut bush.

How mipela collectim geometrid bataflai?



Mipela yusim *light trap method*. Mipela putim lait wantaim waitpela laplap insait long bush na larim ol ikam sindaun. Bihain mipela collectim.

Nau bai yupela lukim sampela piksa bilong Bundi na Mt Whilem geometrid bataflai.

Sampela yupela ino bin lukim na tu ino bin save olsem dispela kain bataflai istap.....tasol ol istap long bush bilong yu. Bai yupela lukim bataflai bilong ol dispela ples:

- Kausi (Brahen)
- Bobrai (Kumi)
- Koviamarai (Kumi)
- Bananumbu (Bundi station)
- Sinopass
- Kiagmanigi (Bruno sawmill)
- Cambridge country (Mt Whilhem) na
- Mt Whilem Lake area

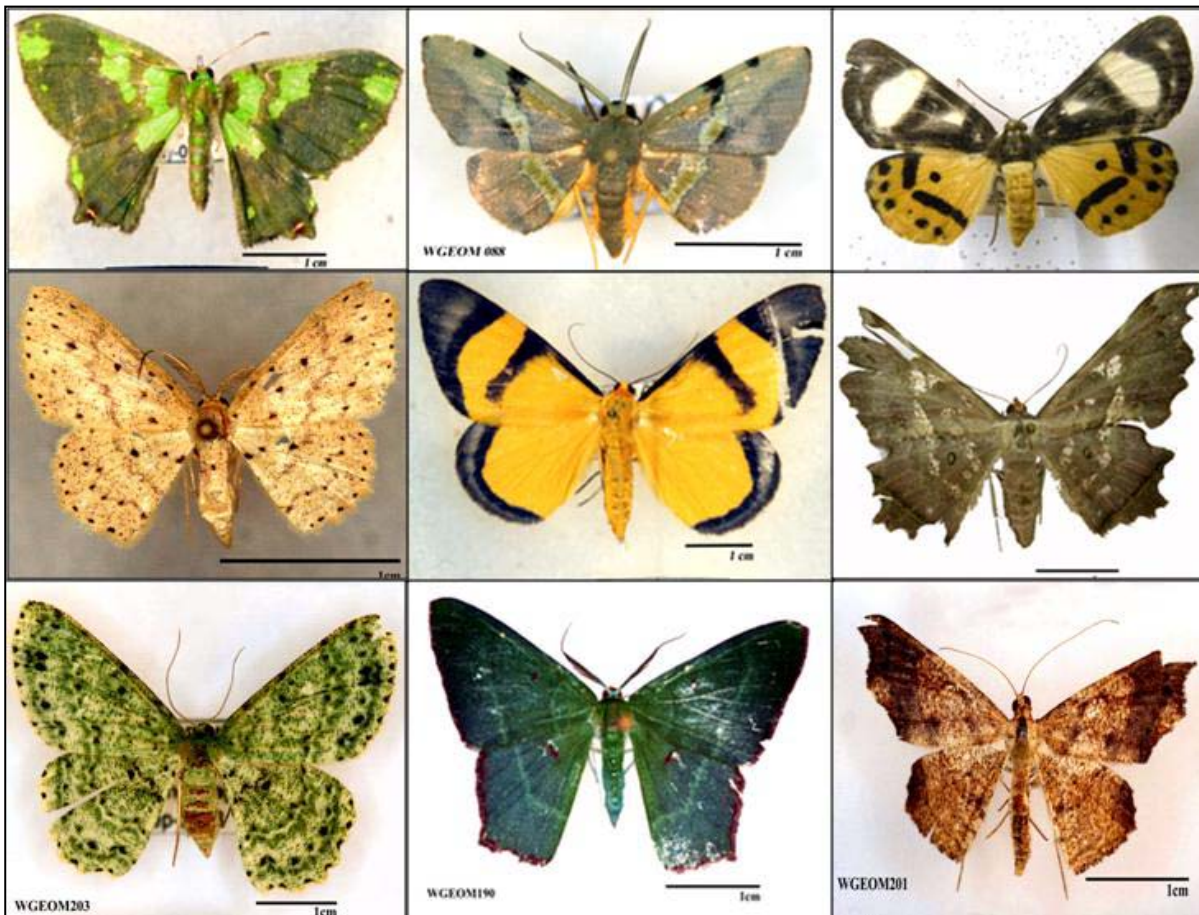
KAUSI (200 m)



Kausi istap klostu long Brahmen station. Emi gat naispela lowland bush wantaim planti diwai na wild animols. Igat 2 pela bikpela wara; Wara *Wege* na Wara *Imbrum*.

Igat planti kainkain color na namba bilong geometrid bataflai is stap long dispela bush.

Ol lain long Kausi igat bikpela hamamas long wok science na ol i interest stret long planti research wok imas igo yet long bush bilong ol.



BOBRAI (700 m)



Bobrai istap namel long Brahmen na Bundi station. Dispela hap area ino gat planti man tumas na igat naispela lowland rainforest.

Igat planti liklik han wara ron ikam daun long maunten. Bobrai i pulap long red na yelo pela marita (pandanus). Ples ino hot tumas na igat planti mosquito liklik.

Dispela bush i gutpela bilong geometrid bataflai bekos igat kainkain istap. Wanpela ol asples man i kolim PNG color batafly (lukim poto below)



KOVIAMARAI (1200 m)



Bush bilong Koviamarai i wankain liklik olsem Bobrai. Igat planti leech (snake bilong pulim blad). Ino gat planti distebance. Ol asples man isave raun long painim wild abus na buai.

Geometrid batafly i pulap long dispela bush tu. Igat kankain istap. Sampela bilong ol ino same olsem bilong Bobrai.



BANANUMBU (1700 m)



Bananumbu istap klostu long Bundi station. Dispela bush em mid-montane forest. Ples i no kol tumas. Igat gutpela wara na wild abus istap.

Geometrid bataflai i planti. Gutpela namba bilong ol i same kain olsem Koviamarai tasol sampela i narapela kain liklik.



SINOPASS (2200 m)



Sinopass i kisim dispela name bekos 'snow' or mist isave karamapim ples planti taim. Igat planti man meri istap. Emi gat montane forest. Ples i kol. Bai yu painim planti diwai grow wantaim moss. Em i pulap tu wantaim karuka (pandanus).

Igat gutpela kaikain geometrid bataflai istap. Planti i mix color, green na brown.

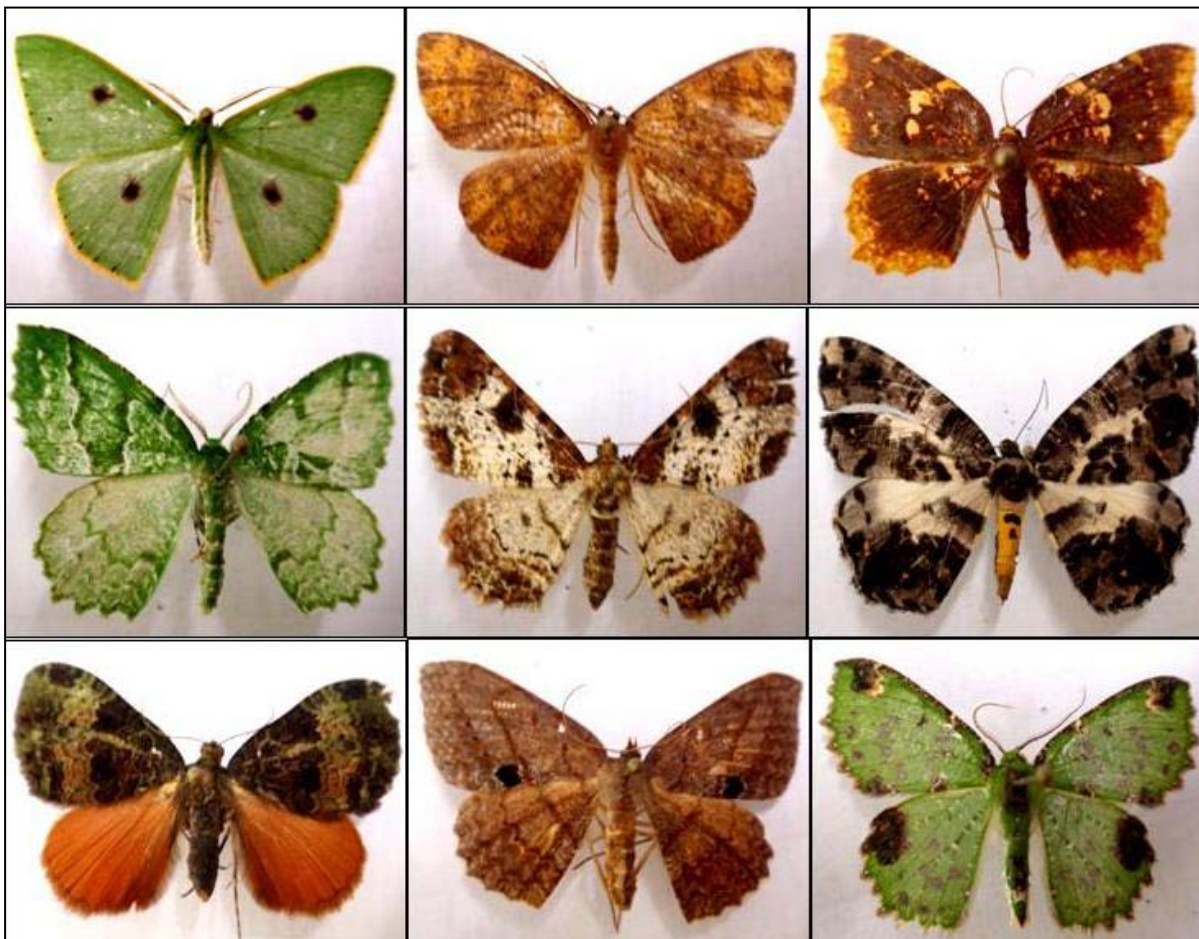


KIAGMANIGI (2700 m)



Kiagmanigi i wanpela ples pulap long kapul na planti karuka (pandanus). Emi i gat bikpela montane forest diwai. Hia bai yu painim ol crawling mamboo pulap. Ol man istap longwe liklik tasol igat gutpela road link.

Geometrid bataflai bilong hia luk nais stret. Planti same kain olsem bilong Sinopass tasol sampela i igat narapela kain wing shape na color. Igat planti istap long dispela bush



CAMBRIDGE COUNTRY-MT WHILEM (3200 m)



Dipela area i kol na wet na ino save kisim sun lait full day. Emi wanpela sub-alpine bush wantaim planti naispela fern grow. Planti diwai bai no inap grow bikpela na longpela. Ol i pulap long wet moss.

Geometrid bataflai ino planti tumas. Planti bilong ol igat liklik na longpela wing. Color bilong ol i black na brown wantaim sampela green. Dispela bekos long kol climate na bush or environment ol istap long em.



MT WHILEM LAKE AREA (3700 m)



Ples em kol tumas wantaim average temperature 10-12 C⁰. Bekos em kol tumas ino gat planti animols na diwai. Planti diwai grow sotpela. Bai yu painim planti grass. Tasol igat planti unique animols na plants olsem orchid istap. Em i wanpela spesol Alpine bush bilong PNG wantaim wildlife yu nonap painim long planti hap. Ino gat planti geometrid bataflai long displa alpine bush. Planti igat brown color mix wantaim black bekos ol i bihainim color bilong bush.



Tok Tenk yu

Bikpela tenkyu igo long ol dispela lain husait i bin halivim long wok moth. Ol i stronpela lain tru bekos mipela isave wok long 6 kilok igo long 12 kilok bik nait. Sampela taim ren na kol isave kilim mipela. Nem bilong ol em:

Michael Sai (Kausi), Joe Mori na Paps Kosy (Kumi), Bill (Bananumbu), Toure Mamu na Witne (Sinopass/Bundikara), Peter Council, Martin Kuno na Peter Tore (Kegesugl/Mt Whilem). Antap long olgeta bikpela tenkyu tru igo long Bonny Herman (Kegesugl/Bundi) long kamap wanpela stronpela man husait istap wantaim wok moth long olgeta hap area. Narapela man tu husat halivim planti stret em Alois Koane (former Bundi LLG president).

Bikpela tok hamamas tu igo long ol papa graun bilong Kausi, Kumi, Bananumbu, Sinopass, Kiagmanigi, Mt Whilem na tu Simbu Provincial Govamen lo larim miplea wok long giraun bilong yupela na Mt Whilem National Park. Long pinisim, bikpela hamamas tru bai igo long ol lain husait i givim liklik makmak lo karim out dispela wok. Em ol Christensen Fund na Mama Graun Fund. Tenkyu tru long yupela olgeta.



NAMBA BLONG OL KAIN KAIN PULIM-WARA BINATANG I STAP LONG WAN WAN HAP, I STAT LONG BUS KLOSTU LONG SOLWARA NA I GO INAP LONG BUS ANTAP LONG MAUNTEN

Francesca Dem na Amos Gibson

Biology Department, University of Papua New Guinea, Port Moresby & New Guinea Binatang Research Center, Madang, Papua New Guinea

Tok i go pass: ol binatang

Gutpela samting long ol binatang:

Namba bilong olgeta binatang i stap long dispela wol we ol saentis i givim nem pinis i kamap 8 million. Ol binatang i stap long olgeta hap, ol i stap aninit na antap long graun, long bus, wara na solwara. Planti long ol dispela binatang yu ken painim i save stap long ples hot na ples i gat planti ren. Ol binatang i save mekim planti gutpela wok long halivim ol yet, halivim narapela animol na halivim yumi ol man tu;

- (1) Taim ol binatang i mekim hul long graun long go insait ol i mekim space blong win long go insait long graun.



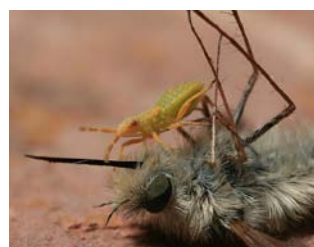
- (2) Taim ol binatang i kaikai long flawa bilong wanpela diwai, ol i save kisim kiau bilong dispela flawa i go long flawa long narapela diwai, dispela rot i halivim long kamapim nupela pikinini diwai.



- (3) Sampela binatang i save kaikai narapela binatang nogut we i save kaikai narapela binatang na diwai olsem kaikai blong ol na givim sik long ol o kilim ol i dai.



- (4) Sampela binatang i save kaikai ol sting samting olsem diwai na lip bilong em, dai animol, pekpek na taim ol i kaikai dispela ol i halivim long brukim dispela na tanim i kamap olsem graun.



HET TOK: PULIM-WARA BINATANG O SAP-SUCKING BINATANG (AUCHENORRHYNCHA: HEMIPTERA)

Pulim-wara binatang em ol wanem kain binatang?

Pulim-wara binatang em ol binatang we ol i save pulim wara blong diwai o narapela animol na kisim olsem kaikai. Dispela ol binatang i liklik tru, samplea yu ken lukim long ai, tasol planti long ol yu ino inap lukim long ai blong yu. Wankain olsem ol narapela binatang, pulim-wara binatang i stap long olgeta hap, long diwai, bus, wara na solwara. Tasol mi lukluk long ol pulim-wara binatang i save stap long bus na diwai tasol.



Penthimiopsis species



Cofana hoogstralli



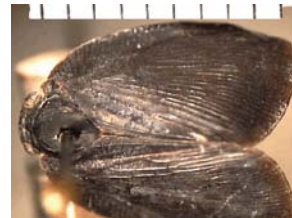
Pentatocephala species



Colgar surrecta



Unknown species 90



Ricania species 1

Piksa 1: Sampela long ol kainkain species bilong pulim-wara binatang i stap long bus na diwai.

Method: Rot mi usim long kisim pulim-wara binatang

Mi usim net long kisim ol dispela binatang. Mi holim dispela net na brumim ol diwai antap (olsem 2 mita) inap long mi holim na tu ol liklik diwai na gras i stap aninit long ol bikpela diwai. Long wanpela raun blong brum mi mekim olsem 500-pela brum, na bihain long 500-pela brum mi bungim olgeta binatang na putim long wanpela kontena. Long wan wan ples mi wok long em, mi mekim olsem 20-pela raun blong 500-pela brum.



Narapela rot em, mi kirapim generata wantaim lait, na taim ol binatang i kam long lait na sindaun antap long waitpela laplap, mi kisim ol na putim long kontena.



(1) Ol pulim wara binatang i stap long Kausi- Brahman, Madang (200m ASL)

Kausi i stap 200 mita antap long solwara, em klostu wankain olsem planti long ol bus i stap long nambis or klostu long solwara. Klostu olgeta species blong diwai i stap long Kausi i wankain olsem ol species blong diwai i stap long ol bus klostu long nambis, na tu hot blong ples na hamas rain pundaun i wankain olsem blong nambis, olsem na long dispela as planti long ol species blong pulim-wara binatang i stap long Kausi em ol i stap tu long bus blong nambis. Mi painim **91 kainkain** pulim-wara binatang i stap long Kausi.

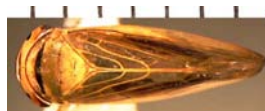
a) **Sampela long ol species bilong pulim-wara binatang i stap long Kausi.**



Rogaina species



Unknown species 1



Kutara lucidicosta



Unknown species 50



Armacia hyalinata



Unknown species 92



Conoguinula coeruleopennis



Flavitartessus flavibasis



Myrilla obscura



Taparella amata



Sephena scutellata



Liorhina species 1



Acanthacus species 1



Zoraida species 1



Unknown species 22



Unknown species 30



Leptatopsis discolor



Unknown species 36



Unknown species 98



Unknown species 100



Unknown species 96

b) Sampela long ol species blong pulim-wara binatang i stap long Kausi tasol.

Daun belo yu ken lukim piksa bilong sampela species ino stap long narapela hap, tasol i stap long Kausi tasol, namba blong ol em 40-pela.



Unknown species 2



Leptatpis discolor



Unknown species 33



Armacia hyalinata



Acrophae fasciata



Neocromna bistriguttata



Unknown species 64



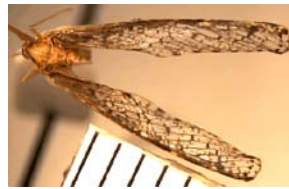
Unknown species 98



Unknown species 102



Ulasia cynaxa



Zoraida species 2



Unknown species 92



Unknown species 96



Tarundia glaucesenus



Unknown species 100

(2) Ol Pulim-wara binatang i stap long Bovrai-Kumi, Madang (700m ASL).

Mi painim 73 **kainkain** pulim –wara binatang i stap long Bovrai, Kumi (lukim table 1 daunbelo). Bovrai, Kumi em klostu wankain osem Kausi na ol nambis bus, osem na planti long ol species bilong pulim-wara binatang yu ken painim long Bovrai, Kumi em yu ken painim long ol bus long nambis tu.

a) Sampela long ol species blong pulim-wara binatang i stap long Bovrai-Kumi.



Roguina species



Unknown species 1



Unknown species 3



Acanthacus species 1



Unknown species 26



Liorhina disjuncta



Liorhina specie. 1



Unknown species 40



Unknown species 31



Unknown species 50



Unknown species 59



Unknown species 85



Sephena scutellata



Lieftinckana species



Unknown species 91



Unknown species 97



Unknown species. 101

b) Sampela long ol pulim-wara binatang i stap long Bovrai-Kumi tasol.



Mileewa species 1



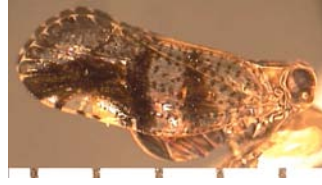
Thagria walkeri



Liorhina species 2



Unknown species 27



Unknown species 46



Unknown species 47



Unknown species 56



Rhotana species 1



Ricania species 1

3) Ol pulim-wara binatang i stap long Koviamarai – Kumi (1200m ASL)

Koviamarai i stap 1200 mita antap long solwara, bikos Koviamarai i stap antap liklik long maunten em i save kol long nait. Long Koviamarai, mi painim 53 **kainkain** pulim-wara binatang i stap.

a) Sampela long ol pulim-wara binatang i stap long Koviamarai



Kutara lucidicosta



Niroanguina species



Philotartessus dimidiatus



Unknown species 1



Conoguinula coeruleopennis



Acanthacus species 1



Liorhina disjuncta



Unknown species 30



Unknown species 32



Unknown species 35



Unknown species 52



Unknown species 91



Ricania species 2

b) Sampela long ol pulim-wara binatang i stap long Koviamarai tasol.

Mi painim **8-pela** kainkain pulim-wara binatang i stap long Koviamarai tasol na ino stap long narapela hap.



Phytotartessus madangensis



Thagria bakeri



Unknown species 4



Mysolis species



Liorhina novabritanniana



Rhotana species 2



Paradaska furtive



Unknown species 94

4) Ol pulim-wara binatang i stap long Bananumbu- Bundi Station (1700m ASL).

Mi painim **21-pela** kainkain pulim-wara binatang (lukim Table 1 daun belo) i stap long Bananumbu. Bananumbu i stap 1700 mita antap long solwara.

a) Sampela long ol pulim-wara binatang i stap long Bananumbu



Conoguina coeruleopennis



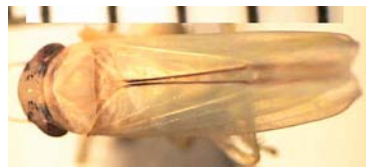
Unknown species 5



Unknown species 6



Thara rufivena



Nirvanguina species



Dichotropis species 1



Unknown species 30



Unknown species 50



Zoraida cf. cumulata



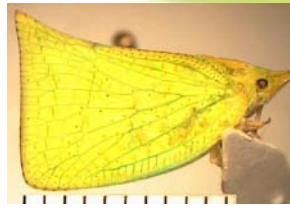
Unknown species 29



Unknown species 35



Unknown species 86



Colgar surrecta

b) Sampela long ol pulim-wara binatang i stap long Bananumbu tasol.

Mi painim **6-pela kainkain** pulim-wara binatang i stap long Bananumbu we mi no painim long narapela hap mi wok long em.



Unknown species 6



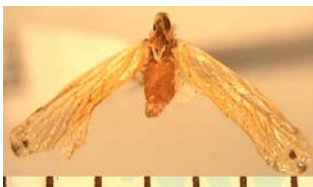
Unknown species 54



Interamma species



Dichotropis species 1



Unknown species 80



Colgar surrecta

5) Ol pulim-wara binatang i stap long Kombogomambuno – Mt Wilhelm (3200m ASL).

Mi painim **17-pela kainkain** pulim-wara binatang (lukim Table 1 daun belo) i stap long Kombogomambuno. Bikos Kombogomambuno i stap antap tru long maunten na tu ples em i kol nogut tru, nogat planti diwai i stap long em olsem na dispela em wanpela as we nogat plant pulim-wara binatang yu ken painim long dispela kain hap.

a) Sampela long ol pulim-wara binatang i stap Kombogomambuno.



Unknown species 7



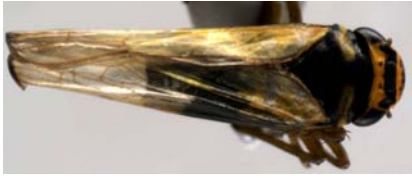
Unknown species 8



Unknown species 9



Liorhina species 3



Unknown species 10



Unknown species 11



Unknown species 34



Acanthacus species 2



Acanthacus species 3

b) Sampela long ol pulim-wara binatang i stap long Kombogambuno tasol.

Mi painim 7-pela **kainkain** pulim-wara binatang (lukim Table 1 daun belo) we i stap long Kombogambuno tasol na i no stap long narapela hap mi wok long em



Unknown species 12



Unknown species 13



Unknown species 14



Unknown species 11



Unknown species 15



Unknown species 9



Unknown species 10

6) Ol pulim-wara binatang i stap long Imbuga Range-Mt Wilhelm (3700m ASL).

Imbuga Range em i stap antap tru long maunten, em i stap 3700 mita antap long solwara. Bikos em i stap antap tru, em i save kol nogut tru na i gat wan wan diwai tasol i stap, gras na ol liklik diwai tasol i kisim ples, long dispela as yu bai lukim olsem nogat planti pulim-wara binatang bai i stap long en.

Mi painim 10-pela kainkain pulim-wara binatang i stap long Imbuga Range.



Unknown species 7



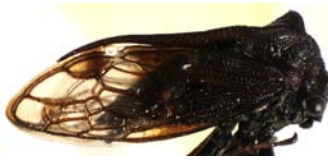
Unknown species 8



Unknown species 16



Unknown species 17



Acanthacus species 4



Acanthacus species 3



Liorhina species 3



Unknown species 45



Unknown species 52

b) Sampela long ol pulim-wara binatang i stap long Imbuga Range tasol.

Mi painim 1-pela kain pulim-wara binatang i stap long Imbuga range tasol na ino stap long narapela hap mi wok long em.



Unknown species 17

Tok tenkyu na hamamas

Mi laik givim bikpela hamamas na tok tenk yu blong mi igo long field assistant blong mi Amos Gibson na ol field collectors we ol i halivim mi long wok blong mi long wan wan hap mi wok long en; Zachery Peter (Kausi), Gabriel Kunda, Valentine Kunda, Junior Alois Koane, Lucas Kimson, Joel Borie, Ben (Bundikara), John Tuma, Vincent (Kegesugu village). Tenk yu i go tu long ol Papagraun long wan wan hap mi wok long en, we ol i larim mi usim bus blong ol long kisim binatang long en. Bikpela amamas na tenk yu blong mi i go long Mr Alois Kaone (senior) long bikpela halivim em i givim long mipela, na mi no lus tingting long ol Catholic Sisters long Bundi station long lukautim mipela long haus blong slip na kaikai. Tenkyu tu long Simbu Provincial Government long givim mipela tok orait long wok long Mt Wilhelm National Park na Mr Eric Sinebare na ol staff blong Sangamanga Cultural Group long support ol i givim long mipela.

Tenkyu long Sentiko Ibalim, Tiffany Onno na Liza B Dahl long wok hat tru long redim ol samting blong wok na kaikai long taim blong patrol.

Tokples nem bilong rokrok (frog) bilong Brahman, Bundi and Mt Wilhelm, Papua Niugini

Chris Dahl, Ismale Kiatik na Ismale Baisen

New Guinea Binatang Research Center, PO Box 604, Madang, Papua New Guinea

Papua Niugini i wanpela bilong of eria insait long wol wei igat planti kainkain diwai, binatang na animol. Antap moa, namba bilong kainkain rokrok (frogs) i kamapim moa long 270 kainkain.

Dispela wok mipela rekodim tok ples nem bilong rokrok ikam long lapun na yanpela. Tokples nem i kam long 3pela narapela tokples grup (Fone Tokples klostu long Brahman, 2. Gendeka long Bundi eria, 3. Mitnuade long Mt Wilhelm eria. Dispela tokples nem igat sampela strongpela mak insait long komuniti. Ol rokrok igat tokples nem bilong bikpela rokrok na sampela igat tumbuna stori and kala na singaut.

Hylidae



Litoria angiana

Gendeka Ig: Gaunna, Ainago, Egembi

Bodi Lent: 50mm

Rokrok bilong diwai (tree frog)

Planti long maunten.

Hibetat: stap antap long diwai arere long han wara and wara ron long maunten.



Litoria arfakiana, Litoria modica

Gendeka Ig: Agamaiporomai, Guretiti

Bodi Lent: 34mm

Rokrok bilong diwai, stap long lowlan eria na maunten arere long han wara.

Hibetat: antap long diwai klostu long han wara na bikpela wara.



Litoria cf. arfakiana

Fone Ig: Ununa elau

Gendeka Ig: Agamaiporomai, Guretiti

Bodi Lent: 21mm

Rokrok bilong diwai. Stap long lowlans na maunten.

Hibetat: antap long diwai klostu long han wara na bikpela wara. Gutpela bilong kaikai. Ununa Elau i minim gren pela kala rorkrok.



Litoria cf. bulmeri

Mitnuade Ig: Buganagauna

Bodi Lent: 34.3mm

Rokrok bilong diwai, stap long maunten.

Hibetat: painim antap long diwai klostu long hand wara.



Litoria cf. bulmeri (juvenile)

Mitnuade Ig: Bugaing

Bodi Lent: 18mm

Rokrok bilong diwai. Stap long long maunten.

Hibetat: antap long diwai klostu long hand wara. Ating bebi bilong Buganagauna

Microhylidae



Callulops wilhelmanus
Mitnuade Ig: Gurume Kuga
Bodi Lent: 46.4mm
 Rokrok istap insait long giraun. Stap long maunten eria
Hibetat: Insait long giraun, aninit long rop, na grass.



Cophixalus sp.3 cf shellyi
Gendeka Ig: Akoko, Pepetongai
Bodi Lent: 22.3mm
 Stap long lowland na maunten.
Hibetat: Stap long lip long giraun.



Cophixalus sp.15 cf nubicola
Mitnuade Ig: Kendabba
Bodi Lent: 26mm
 Planti long maunten.
Hibetat: stap long kol ples antap long liklik diwai.



Copiula cf tyleri
Gendeka Ig: Akoko, Pepetongai
Bodi Lent: 22.3mm
 Stap long lowlands na maunten.
Hibetat: stap antap long lip na narapela



Hylophorbus sp.7
Fone Ig: Ununa folomu
Bodyi Lent: 30.5mm
 Kamap planti long lowlands and maunten eria.
Hibetat: stap long graun insait long big bus. Dispela rokrok ol usim long hook long string na kisim pis long wara.



Oreophryne hypsiops
Gendeka Ig: Hangebe, Bobo
BodiLent: 22mm
 Planti long lowlands and maunten.
Habitat: stap antap long diwai long bik bus na bagarap bus.



Oxydactyla sp.4 cf stenodactyla
Mitnuade Ig: Kuga
Bodi Lent: 25mm
 Planti long maunten erias.
Hibetat: stap long kol ples insait long giraun, grass, and lip.



Xenorhina oxycephala
Gendeka Ig: TintinBobo
Bodi Lent: 22.1mm
 Stap long lowlands and maunten.
Hibetat: stap insait long giraun, grass na lip. TintinBobo minim rokrok igat bikpela bel na les rokrok.

Ranidae



Rana arfaki

Fone Ig: Ununa otomo

Gendeka Ig: Akoko, Vakaru

Bodi Lent: 123.5mm

Bikpela rokrok bilong wara, planti long lowlans na mauten.

Hibetat: han wara, na bikpela wara. Gutpela bilong kaikai. Nau Rabaul rokrok (cane toad) istap pinis na igat poret olsem dispela rokrok givim poisin igo long narapela gutpela rokrok.



Rana grisea

Gendeka Ig: Bazagei

Bodi Lent: 53mm

Planti long lowlans na mautens.

Hibetat: stap long bik bus na bagarap bus na klostu long han wara. Gutpela long kaikai.



Platymantis papuensis

Gendeka Ig: Bazagei

Bodi Lent: 40mm

Stap planti long bagarap bus long lowlan erias.

Hibetat: bagarap bus, gaden, na kunai. Dispela rokrok statim singaut olgeta apinun.

**Tumbuna stori ikam long
Kausi, Bundi na Mt Wilhelm
(traditional frog stories)**

Kausi stori 1

Rana arfaki (Ununa otomo) long Kausi I spesol bilong wanem bikpela singaut bilong em isave givim signs igo long tupela niupela merit. Singaut bilong dispela rokrok inambawan wei bilong ol manmeri long save niupela man na meri (secret admirers). Igat bilip olsem sapos rokrok ikalap long wanpela man o meri, dispela soim em bai gat niupela pren man o meri.

Bundi stori 2

Xenobatrachus sp (tintinbobo) em spesol rokrok wei long taim bilong tumbuna ol usim olsem wanpela rot bilong panisim meri ibikhet long man. Olsem sapos meri ironawei long man bilong em o bikhet, Man bai panim dispela rokrok na taitim lek o bel bilong rokrok na tromoi long hol bilong stone (cave). Dispela bai wokim meri noken bikhet na stap gut wantaim man na komuniti. Sapos nogat em bai kisim sik na sapos rokrok idai dispela bikhet meri bai dai tu.

Dispela bilip bilong rokrok ikamapim poret na wokim sindaun bilong manmeri long komuniti kamap gut.

Mt Wilhelm stori 3

Wankain stori long Mt Wilhelm. Taim meri ibikhet long man bilong em. Man kisim ret (red) kala rokrok o bilak (black) kala rokrok long putim poisen long meri. Bipo planti meri dres long purpur (grassskirt), man lukim kala bilong purpur sapos em bilak ol makim bilak rokrok o ret na wokim bilak magic na meri kisim bikpela sik. Tokples ret em Yaungage na bilak Ainage.



Environment Education talk at Malmal Elementary School

May, June 2010.

Malmal Elementary School is a local within the Malmal village. There are children coming from Riwo communities. In May we visited Malmal Elementary School which I give a short talk to the school children about Science and Environment. In June the school invited the staff to celebrate with them June 5th World Environment Day “**MANY SPECIES – ONE PLANET- ONE FUTURE**”



Left: Chris talking to the children on Science and Environment topic as a class topic. **Right:** Joseph Valeba pointing to the children the importance of science work on the poster.

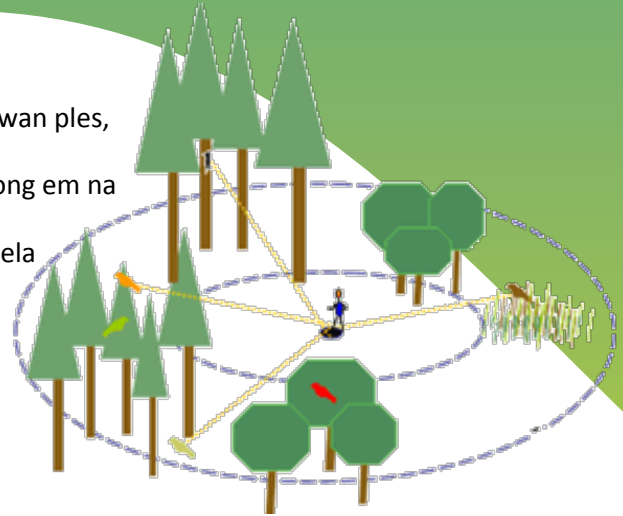


Right: Elementary children looking at different species insects and frogs on display during the World Environment Day Celebration. **Left:** Two children raising their hands to answer the question asked during the Environment Day.

Pisin patrol - Wanem kaunim pisin?

1. Point-count

Taim long point-count yu go long bus na stap 15 minit long wanwan ples, na kaunim olgeta pisin yu inap lukim o harim. Yu raitim nem bilong em na wanem yu lukim o harim. Bihain long 15 minit, yu go long narapela hap longwe liklik olsem 150 mita na stap na raitim olgeta pisin gen.



2. Mist-netting

Mist-netting em narapela rot long lukim na kaunim ol pisin.

Yu sanapim net long longpela bilong man na wet long ol pisin.



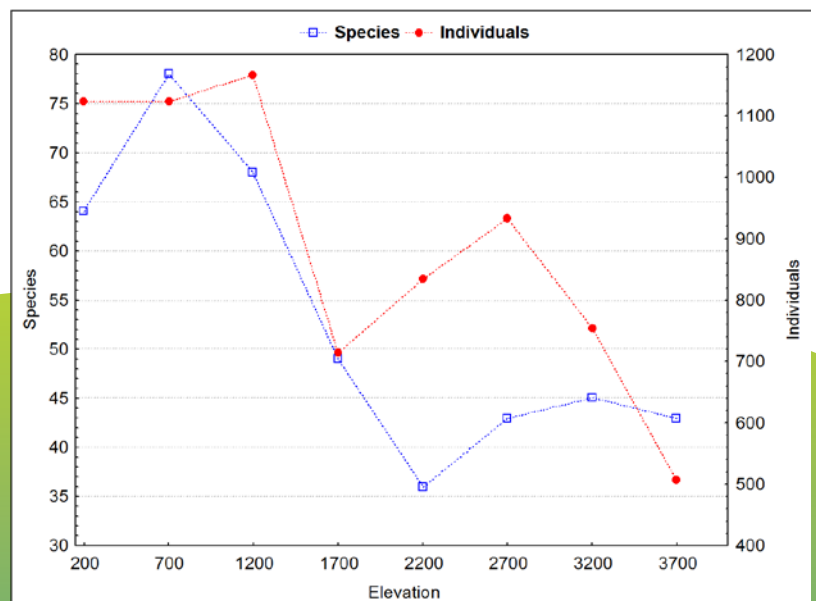
Pisin em i no inap lukim net na bai plai insait. Bihain long 30 minit, yu go na rausim ogeta pisin na putim ol insait long liklik bilum.



Bihain yu skelim hevi na makim longpela bilong em. Yu makim tel, han na nus bilong pisin. Bihain yu putim ring bilong em na rausim go back long bus.

Wanem mipla painim pisin?

Mipla kaunim olgeta pisin pinis na mekim liklik piksa bilong ol namba. Yu ken lukim 700 m (Kumi) em gat planti moa pisin. Narapela ples bilong nambis gat planti tu. Kol ples long Mt Wilhelm, Bruno Somil na Sinopas i gat liklik tasol.



Kausi – 200 m



Common name: Rufous-bellied Kookaburra
Scientific name: *Dacelo gaudichaud*
Tokples name: **Ata ora**

Dispela pisin em i save kaikai binatang na sampla liklik abus olsem ol palai. Em i stap antap long han bilong diwai. Em i save stap long ol nambis ples tasol.



Common name: Beautiful Dove

Scientific name: *Ptilinopus pulchellus*
Tokples name: **Auni**

Dispela pisin em i save kaikai prut namel long bikbus. Em i save stap antap long diwai tasol. Em no i save kam long ples klia. Em stap long nambis ples tasol.



Common name: Brown Cuckoo-dove
Scientific name: *Macropygia amboinensis*
Tokples name: **Tua**

Dispela pisin em i save kaikai pikinini long diwai. Em save stap long maunten na nambis ples wantaim. Em stap klostu tu long ol hauslain, bus we ol katim pinis na em kamap gen. Em save brukim ol liklik han bilong diwai nau em krosim i go kam na putim kiau bilong em antap long em.



Common name: Lesser Bird of paradise
Scientific name: *Paradisaea minor*
Tokples name: **Atafo**

Em kaikai prut na em save stap to nambis ples tasol. Em save danis antap long han bilong diwai na tu, em save soim kala bilong em long grisim meri pisin. Dispela pisin i save stap long nambis ples tasol.



Common name: Dwarf kingfisher
Scientific name: *Ceyx lepidus*
Tokples name: **wini ai**

Dispela pisin i save stap klostu long wara. Em save kaikai ol liklik binatang wantaim sampela liklik pis. Ples we wara em pundaund na mekim ul long em, em we dispela pisin i save mekim haus bilong em na putim kiau.





Common name: Sulphur crested Cuckatoo

Scientific name: *Cacatua galerita*

Tokples name: kaifa

Em save kaikai ol prut na pikinini bilong diwai. Em save wokim haus bilong em long diwai gro stap long em. Na long antap bilong em gat ul long em, em save makim ul bilong em na em save slip. Ems a stap long hotpela ples tasol.

Common name: Sooty Thicket Fantail

Scientific name: *Rhipidura threnothorax*

Tokples name: ??

Em save raun tamblo long graun tasol, em i no save plai antap long ol diwai. Em save kaikai liklik ol bataplai wantaim ol kainkain binatang.



Common name: Common Paradise Kingfisher

Scientific name: *Tanysiptera galatea*

Tokples name: ??

Em save stap long bikipela bus tasol. Em save plai antap long diwai na long ananit long nupela diwai i gro long em. Em save painim ol binatang insait long bus. Em save stap namel long haus bilong kurakum.

Common name: Black Cuckatoo

Scientific name: *Probosciger aterinus*

Tokples name: ??

Dispela em Blek koki na em save plai antap long bikipela diwai namel long big bus long ples nambis. Em kaikai ol pikinini bilong diwai olsem ton na prut olsem popo na wail banana. Haus bilong em save stap antap long bikipela diwai.



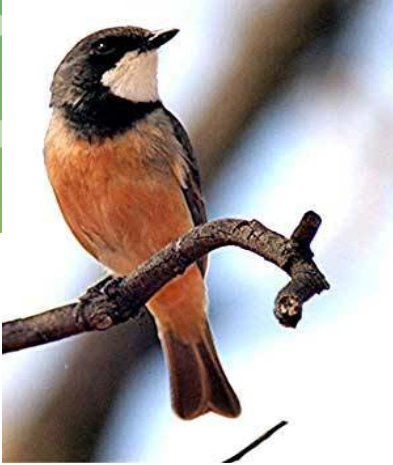
Common name: Zoe Imperial Pigeon

Scientific name: *Ducula zoeae*

Tokples name: ipa um

Em kaikai bikipela prut na em save stap namel long bikipela bus. Em stap namel long boda bilong ol hailens na long nambis ples.

Kumi – 700m



Common name: Rusty Whistler
Scientific name: *Pachycephala hyperythra*
Tokples name: fono au

Em stap long namel bilong bus. Em save painim ol kaikai bilong em ol binatang. Em stap long as bilong ol maunten o klostu long ol stat bilong ol maunten



Common name: Wompoo Prut-Dove
Scientific name: *Ptilinopus magnificus*
Tokples name: tombu

Em i save kaikai bikpela prut na em save stap namel long bikpela bus. Em no save plai antap long ol diwai. Em save raun tamblo long graun tasol. Na em save painim kaikai bilong em. Em stap long nambis na namel long boda bilong ol hailens.



Common name: Helmeted Friarbird
Scientific name: *Philemon bucceroides*
Tokples name: nafena

Dispela pisin ol raun long grup antap long diwai na ol save painim kaikai bilong ol long antap long diwai i karim flawa bilong em. Na em save kaikai prut na binatang tu. Em save kam long ples klia olsem town na ol wara na ol gaden tu.

Common name: Double-eyed Fig-parrot
Scientific name: *Cyclopsitta diophthalmica*
Tokples name: tupini

Dispela pisin em kaikai pikinini bilong ficus diwai. Em save makim ul long diwai long nus bilong em. Em stap long bikpela bus na long liklik bus tu.



Common name: Northern Fantail
Scientific name: *Rhipidura rufiventris*
Tokples name: ??

Em stap long namel bilong bus. Em save painim ol kaikai bilong em ol binatang. Em stap long nambis ples tasol.

Mumtava – 1200 m



Common name: Spangled Drongo
Scientific name: *Dicrurus hottentottus*
Tokples name: jau jene

Em save stap long ples klia na long gaden wantaim. Em save lukluk long graun long lukim sampela binatang nambaut long tamblo long graun bilong ketchim na kaikai. Em save raun wantaim kumul na pisin ol i gat poisen long maus bilong ol.



Common name: Common Smoky Honeyeater
Scientific name: *Melipotes fumigatus*
Tokples name: gori toro

Em save stap long bikipela bus na long liklik bus tu. Em save kaikai ol prut tasol. Em save stap klostu long nambis na i go antap olsem long kol ples.



Common name: Stephan's Prut-dove
Scientific name: *Chalcophaps stephani*
Tokples name: tombu

Em kaikai bikipela prut na em save stap namel long bikipela bus. Em stap long nambis ples tasol.

Common name: Marbled
Frogmouth
Scientific name: *Podargus ocellatus*
Tokples name: koreme

Dispela pisin em save plai long nait na painim ol kaikai bilong em olsem ol rat na ol rokrok. Em save stap long Kumi na go antap Sino Pass long sait go olsem long Madang.



Common name: Brush Cuckoo
Scientific name: *Cacomantis variolosus*
Tokples name: ??

Dispela pisin stap insait long bikipela bus na stap antap onepela diwai na singau na singau olgeta day. Sapos em no singaut, em kaikai liklik snek bilong bataplai na narapela binatang. Em stap lo Kausi, Kumi na Mumtava. Em no go antap long maunten.

Bundi – 1700 m



Common name: Friendly Fantail
Scientific name: *Rhipidura albolimbata*
Tokples name: tyto

Sapos man i go insait long bus disla pisin go na lukim em na kaikai olgeta binatang man i wokabaut na kirapim. Em stap ananit long ol diwai long graun na kaikai ol liklik snek na natnat. Em stap long Bundi na go antap long Mt. Wilhelm.

Common name: Magnificent Bird of Paradisea
Scientific name: *Cicinurus magnificus*
Tokples name: eyawe



Em save danis antap long han bilong diwai em save soim kala bilong em long grisim meri pisin. Em kaikai olgeta prut na sampela taim em save kaikai binatang. Singaut bilong em em bikpela na em save paitim tupela han bilong em taim em singaut. Dispela pisin i save stap long nambis sait i go antap long Bundi sait.



Common name: New Guinea White Eye
Scientific name: *Zosterops navaeguineae*
Tokples name: uriware

Dispela pisin ol raun long grup antap long diwai. Em stap long bikpela na liklik bus tu. Ems tap long Kumi, Bundi na Sino Pass tu.

Common name: Spotted Jewel-Babbler
Scientific name: *Ptilorrhoa leucosticta*
Tokples name: ??

Dispela pisin em bilong graun tasol. Em no save plai antap na em stap long graun tasol. Em sekim graun na bungim ol binatang na ran hariap hariap. Dispela pisin ol raun long grup wantaim kainkain pisin. Ems tap long Bundi na Sino Pass tasol.



Common name: Black-breasted Boatbill
Scientific name: *Machaerirhynchus nigripectus*
Tokples name: ololatupa

Dispela pisin em gat nus olem spun. Em save kaikai bintang na natnat. Sapos em laik grisim meri bilong em, em save danis na putim tel bilong em go antap na kamdaun. Em stap insait long bikpela bus long nambis sait na go antap long Bundi tu.

Sino Pass – 2200 m



Common name: Papuan Flowerpecker
Scientific name: *Dicaeum pectorale*
Tokples name: dendembrangi

Dispela pisin ol raun long grup antap long diwai. Em stap long bikpela na liklik bus tu. Em save laik sanap antap long ol lapun diwai na lukluk raun long ol binatang. Em stap long nambis sait na go antap long 2300 mitas (Sino Pass).

Common name: Golden Monarch
Scientific name: *Monarcha chrysomela*
Tokples name: jene (Kausi)

Dispela pisin gat narapela meri na narapela man. Man i luk olsem disla long piksa. Meri bilong em no gat golden kala. Disla pisin em hariap na hariap na singaut planti tru. Em raun long grup wantaim ol narapela kainkain pisin. Em stap antap long diwai na kaikai binatang. Dispela pisin bilong nambis sait na go antap long Sino Pass wanwan time.



Common name: Great Cuckoo Dove
Scientific name: *Reinwardtoena reinwardtii*
Tokples name: ekewi

Dispela pisin em bikpela tru na em gat longpela tel tu. Em save stap antap long diwai insait long bikpela bus. Em save kaikai prut. Wanwan time em save godaun long graun na kaikai banana mau na popo tu.

Common name: Red Collared Myzomela
Scientific name: *Myzomela rosenbergii*
Tokples name: anna/noroga

Dispela pisin gat tupla kala. Man em ret na blak na meri em braun na ret liklik. Em save kaikai flawa na singaut taim em plai nambaut.



Common name: Chesnut-breasted Cuckoo
Scientific name: *Cacomantis castaneiventris*
Tokples name: ??

Dispela pisin save kaikai salat snek bilong bataplai. Em stap long Bundi na Sino Pass tasol.



Bruno Somil – 2700 m



Common name: Princess Stephanies Astrapia
Scientific name: *Astrapia stephaniae*
Tokples name: mege

Man bilong dispela pisin em gat longpela tel tru. Taim em laik kisim meri bilong em, em save senisim kala na rausim blek gras bilong em. Em stap antap long diwai na kaikai prut. Em stap long maunten tasol. Em stap insait long bikpela bus long Sino Pass, Bruno Somil na Mt. Wilhelm.

Common name: Papuan Lorikeet
Scientific name: *Charmosyna papou*
Tokples name: kuzitaj



Meri na man stap wantaim. Ol save stap insait long bikpela bus na liklik bus wantaim. Em save kaikai flawa bilong diwai. Em save stap antap long maunten olsem Bruno Somil na antap long Lake sto long Mt. Wilhelm.



Common name: Brown Sicklebill
Scientific name: *Epimachus meyeri*
Tokples name: bangre

Strongpela singaut bilong dispel pisin. Em save stap antap tru long diwai na singaut long moning na apinun. Singaut bilong em em olsem gun. Em save kaikai pikinin bilong diwai na binatang tu. Em stap long central range sait blo Bruno Somil na Keglsugl.

Common name: Maunten Peltop
Scientific name: *Peltop montanus*
Tokples name: guimginagamaga



Em save stap long namel bilong bus na wanwan taim i save stap antap long ol drai diwai. Em save painim ol kaikai bilong em ol binatang. Em stap long 550 mita i go antap long 3000 mitas.

Common name: Forbes's Rail
Scientific name: *Rallina forbesi*
Tokples name: kunaj grora



Dispela pisin em bilong graun tasol. Em no save plai antap na em stap long graun tasol. Em stap insait long bikpela bus. Meri bilong em i save kisim planti man na i go na givim em kiau insait long ul. Ol man i save lukim kiau na kisim na lukautim. Meri pisin i save wokim wanpela samting.

Mt. Wilhelm (Komboko Mambuno) – 3200 m



Common name: Belfold's Honeyeater
Scientific name: *Melidectes belfoldi*
Tokples name: **mori**

Dispela pisin ol raun long grup antap long diwai na ol save painim kaikai bilong ol long antap long diwai i karim flawa bilong em. Na em save kaikai prut na binatang tu. Em save kam long ples klia olsem taun na ol wara na ol gaden tu.

Common name: Crested Bird of Paradise
Scientific name: *Cnemophilus macgregorii*
Tokples name: **bergi**



Em save danis antap long ant bilong diwai em save soim kala na bilas bilong em long grisim meri pisin. Em kaikai olgeta prut na samplataim em save kaikai binatang. Em stap long 2400 long 3500 mitas insait bikpela bus tasol.



Common name: Common Smoky Honeyeater
Scientific name: *Melidectes fumigatus*
Tokples name: **gori toro**

Em save stap long bikpela bus na long liklik bus tu. Em save kaikai ol prut tasol. Em stap long maunten tasol na laikim kol ples. Em bikhet pisin liklik na em save paitim olgeta naraple pisin sapos ol kam klostu long em. Em stap long Mumtava na go antap long Mt. Wilhelm.

Common name: Common Smoky Honeyeater
Scientific name: *Melidectes fumigatus*
Tokples name: **gori toro**

Em stap insait moss bus na pulim nus bilong em insait diwai na lukim binatang na kaikai. Wanwan taim em raun long grup kainkain narapela pisin ol kaikai binatang. Em stap long maunten olsem Sino Pass na Mt. Wilhelm. Em i no save go daun long nambis.



Mt. Wilhelm – 3700 m



Common name: Apline Pipit
Scientific name: *Anthus guttularis*
Tokples name: kurakumba (Chimbu)

Dispela pisin em no stap insiat long bus. Em laik stap long gras na go antap long dai diwai tasol na singaut long dispela ples. Wanwan taim em i go insait long bus na sekim binatang na narapela kaikai olsem pikinini bilong diwai. Em laikim stone tu na wanwan taim em stap antap long stone na save hariap na painim natnat na kaikai.

Common name: Painted Tiger Parrot
Scientific name: *Psitacella picta*
Tokples name: mingowi

Dispela pisin save kaikai pikinini bilong diwai na stap insait long liklik bus antap long maunten sait. Em no save laikim hat ples na stap long Mt. Wilhelm sait tasol.



Common name: Emeral Lorikeet
Scientific name: *Neopsittacus palicauda*
Tokples name: japoperi

Em save stap long ples klia na long gaden wantaim. Dispela pisin ol raun long grup antap long diwai na em no save go insait long bus. Em kaikai pikinini bilong diwai na flawa wantaim. Em i no save laikim hat ples na stap long Mt. Wilhelm sait tasol. Wanwan taim em save go daun long Bruno Somil na Sino Pass.

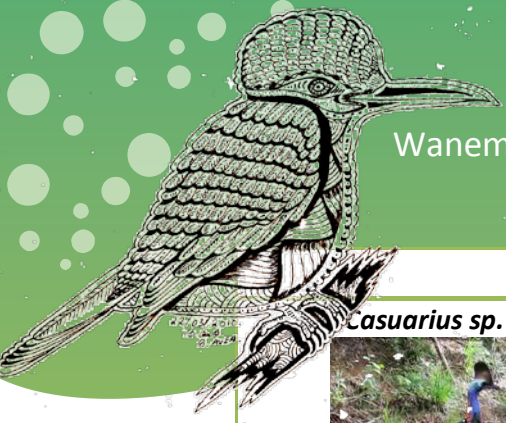
Common name: Crested Berrypecker
Scientific name: *Paramythia montinum*
Tokples name: gendi

Dispela pisin i save kaikai kainkain pikinini diwai. Em raun one time bikpela grup na singaut planti. Em stap insait long bikpela bus na liklik bus wantaim. Em likim gras tu.



Common name: Ashy Robin
Scientific name: *Poecilodryas albispecularis*
Tokples name: ??

Em save raun tamblo long graun tasol, em no save plai antap long ol diwai. Em stap insait long bikpela bus tasol. Em save kaikai binatang. Em stap long Sino Pass na Bruno Somil. Wanwan taim kam antap long lake sait clos to Mt. Wilhelm.








Wanem nem bilong kainkain pisin long narapela tokples?






| | <u>Kausi</u> | <u>Bundi</u> | <u>Chimbu</u> |
|--|--------------|----------------------|---------------|
| <p><i>Casuarus sp.</i></p>  | kioli | kembu | kombri |
| Birds of prey | | | |
| <i>Accipiter meyerianus</i> | tebe | kizarakekendumo | kekomba |
| <p><i>Accipiter novaehollandiae</i></p>  | | konokora -white form | |
| | | niweniwe - dark form | |
| <p><i>Haliastur Indus</i></p>  | | | kwabom |
| <p><i>Rallina forbesi</i></p>  | | kunaj grora | bogobagre |
| <p><i>Henicophaps sp., Ducula sp., Chalcophaps sp.</i></p>  | ipa um | | tombu/imuch |
| <p><i>Ducula zoea</i></p>  | | imuri | imuch |

| | <u>Kausi</u> | <u>Bundi</u> | <u>Chimbu</u> |
|--|--------------|--------------|---------------|
| <p><i>Goura sp.</i></p>  | mooluwa | mui | |
| <p><i>Macropygia amboiensis</i></p>  | tua | wajbono | wajnobono |
| <p><i>Ptilinopus sp.</i></p>  | auni | tombu | tombu |
| <p><i>Ptilinopus magnificus</i></p>  | ulua ulu | | |
| <p><i>Lorius lori</i></p>  | aula | kijowo | |
| <p><i>Electus roratus</i></p>  | kera | | |
| <p><i>Cacatua galerita</i></p> | kaifa | gozi | |
| <p><i>Probosciger atterinus</i></p> | kotaifa | guinuwaj | |
| <p><i>Small parrots (Micropsitta, Psittaculirostris, Psitacella)</i></p>  | tupini | kindigiri | mogban |
| <p><i>Psittacella picta</i></p> | | mingowi | mogban |

| | <u>Kausi</u> | <u>Bundi</u> | <u>Chimbu</u> |
|--|---|--------------|-----------------|
| <i>Chalcopssitta scintillata</i> |  | kiringam | |
| <i>Neopsittacus musschenbroekii</i> | | | gigmande |
| <i>Neopsittacus pulicauda</i> | | japoperi | perr |
| <i>Charmosyna papou</i> | | kuzitaj | kaigle |
| <i>Trichoglossus haematodus</i>  | ili umu | | |
| <i>Dacelo sp.</i>  | ata ora | pogro | |
| <i>Alcedo sp., Halcyon sp.</i> | wini ay | | |
| <i>Tanysiptera sp.</i>  | kisali | | |
| <i>Rhithiceros plicatus</i>  | minipi | mui | kauka |
| <i>Podargus sp.</i> | pawi | koreme | kupmekomba |
| <i>Tyto sp. (owls-black eyes)</i> | mana | irojowo | sije |
| <i>Owls (yellow eyes)</i> | | trunbro | surumbuko |
| <i>Nightjars</i> | pawi | mendendowi | mendendu |
| <i>Swifts</i> | safi safi  | | indanda |
| <i>Artamus sp.</i> | | gaga | indanda gimbach |
| <i>Swiftlets</i> | | mogmajna | |
| <i>Hirundinaceae</i> | | diriwandaj | windajda |
| <i>Pitta erythrogaster</i>  | pulu | | |

| | <u>Kausi</u> | <u>Bundi</u> | <u>Chimbu</u> | |
|---|--|---|----------------|--------------|
| <i>Coracina boyeri</i> | | inolonga | | |
| <i>Malurus alboscapulatus</i> | | kojnandri | tenwage | |
| <i>Sericornis sp.</i> |  tu a | terembra | | |
| <i>Sericornis sp. - large</i> | | kenguari | bormane | |
| <i>Sericornis sp. - small</i> | | nambajo | teremba | |
| <i>Rhipidura albolimbata</i> |  | tyto | pingimepangime | |
| <i>Rhipidura atra</i> | | typijape mana (M) | gerengajre | |
| <i>Rhipidura leucophrys</i> | | typijape gemnanga (F) | | |
| <i>Peneothello sigillatus</i> |  | miningoroa | sikubang | |
| <i>Peneothello cyanus</i> | | kumingia | | |
| <i>Meliphaga sp., Lichenostomus sp.</i> |  Nafena  | | | |
| <i>Melidectes fuscus</i> | | togi | tynarengoro | |
| <i>Melipotes fumigatus</i> | | gorizoro | minmogoyagl | |
| <i>Melidectes belfordi</i> | | gori toro | wocha | |
| <i>Melilestes megarhynchus</i> | | mori | auka muchu | |
| <i>Melidectes princeps</i> | | kwakija | | |
| | | | paunangojach | |
| | | | anna (F) | weraj (F) |
| <i>Myzomela rosenbergi</i> | | | noroga (M) | wijenoch (M) |
| Finches | |  bewa | | |
| <i>Erythrura papuana</i> | | | | |
| | | winwa | inawa | |
| | | pandynambu | pandynambu | |

| | <u>Kausi</u> | <u>Bundi</u> | <u>Chimbu</u> |
|---|---|---------------|-----------------|
| <i>Ptiloprora perstriata</i> | | iriwi | wena |
| <i>Zosterops novaeguineae</i> |  | uriware | wiruage |
| <i>Oreocharis arfaki</i> |  | tygo | |
| <i>Melanocharis versteri</i> |  | karanguno | karanguno werai |
| | | | karanguno |
| <i>Pitohui sp.</i>  | ili olo | | toruo |
| Whistlers | fono au | ongum | ongum |
| <i>Pachycephala rufinucha</i> | | peneto | |
| <i>Microeca papuana</i> | | witili | |
| <i>Motacilla cinerea</i> | | kurindujiduji | |
| <i>Philemon bucceroides</i> | oswa | koz waj | |
| <i>Paradisaea minor</i> | atafo | kandambo | jambage |
| <i>Paradisaea sp. - red tel</i>  | | baunde | baunde |
| <i>Paradisaea sp. - yellow tel</i>  | | kandambo | jambage |
| <i>Manucodia sp.</i> | | du | |

| | <u>Kausi</u> | <u>Bundi</u> | <u>Chimbu</u> |
|---|--------------|--------------|---------------|
| <i>Parotia sp.</i>  | | eyawe | migue |
| <i>Astrapia stephaniae</i> | | mege | sine |
| <i>Astrapia splendissima</i> | | gandunu | gandin |
| <i>Astrapia meyeri</i>  | | mege krua | mege kruo |
| <i>Epimachus meyeri</i>  | | bangre | kendecho |
| <i>Pteridophora alberti</i>  | | kriwua | |
| <i>Lophorina superb</i>  | | keneri | kongragre |
| <i>Ptiloris magnificus</i> | | eyawe | |
| <i>Ciccinnurus regius</i>  | fono tona | witaro | |
| <i>Dicrurus hotentotus</i> | jau jene | | |

